

Gateway PTSA 7.3.72

eBlast

Oct 13, 2019

Keeping the lines of communication open between parents, teachers, and administrators of Gateway Middle School.

The PTSA strengthens our schools and benefits our children.

www.gatewayptsa.org



Follow Us



[Translate.google.com](https://translate.google.com)

Current Members: 371

Goal: 360 & 100% staff memberships

2018-19:

336

[Membership Form](#)

All PTAs, not just PTSAs, can have student members. Older students will especially appreciate having a voice at the table when it comes to planning programs and activities at their school. WSPTA is even adding student-specific programming to Legislative Assembly and Convention this year! Need ideas on how to involve your students? Contact ptamembdir@wastatepta.org

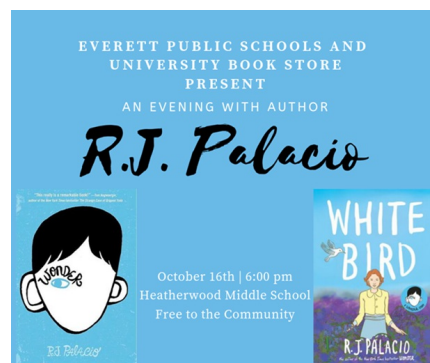
Member benefits and discounts are available to all Washington State PTA members. <https://www.wastatepta.org/get-involved/member-benefits/>

Take advantage of these benefit offers:

- LEGO® Bag - 40% discount on LEGO® Bag products.
- Wild Waves - discounts for Fright Fest now available.
- Great Wolf Lodge - save up to 30% on your next stay.
- Office Depot - savings on school supplies, office products, technology, furniture, and print.
- Tickets at Work - receive 20-70% off on movies, hotels, shows, concerts, sporting events, and more.

RJ Palacio Visit Oct. 16

Families are invited to join us on October 16th as we welcome author, R.J. Palacio. She will be speaking about her writing and introduce her new graphic novel, White Bird. Her presentation will be followed by a signing meet and greet where you can have your book autographed. Pre-orders of the book are welcome, as the University Book Store will have a limited number on hand for purchase at the event. Order forms are available at the Gateway Library or can be downloaded here. The event will be held at Heatherwood Middle School at 6:00pm



GATEWAY PTSA NEWS

Upcoming Dates

Oct 14 PTSA BOD meeting, 6:30pm

Oct 16 Author, R.J. Palacio visit, 6pm Heatherwood MS

Oct 17 6th grade school social

Oct 18 Teacher work day-no school for students

Oct 24 AR Workshop fundraiser**

**PLEASE feel free to post it on your personal Facebook Page and/or send out to emails to friends. The more we register, the more we get back!

<https://www.arworkshop.com/event/?loc=millcreek&ev=117863>

Oct 26-27 WSPTA Legislative Assembly in Bellevue

Nov 8 Reflections art entries due

Nov 18 Get Real Curriculum presentation at 5:30pm followed by PTSA Meeting at 6:30pm

Be sure to check out the Gateway Middle School calendar for more school event dates: [GATEWAY CALENDAR](#)

Please join us for our first Gateway PTSA Fundraiser of the school year! Thursday, October 24th from 6:00 - 9:00 pm

We will be hosting a private evening event at AR Workshop in Mill Creek where you can make a number of beautiful personalized items. These items make great gifts or just something special for your own home.



You must register using the following link: <https://www.arworkshop.com/event/?ev=117863&loc=millcreek>

The more we register, the more money we earn. Please feel free to invite friends and family!

WSPTA Reflections Art Contest

Reflections is a National PTA arts recognition program that helps students explore their own thoughts, feelings and ideas, develop artistic literacy, increase confidence, and find a love for learning that will help them become more successful not only in school, but in life.

Students in pre-K through grade 12 create original works of art in response to a theme. The theme for the 2019-2020 program year is Look Within. Students submit their completed works of art in one, or all, of the available arts categories: Dance Choreography, Film Production, Literature, Music Composition, Photography, Visual Arts. Completed entries are due **Nov. 8th** to Ms. McArthur's art room. Entry forms and rules can be found by welcome bulletin by school front office doors (by end of this week) or [online](#)



[Reflections Info Video](#)

Welcome to the Gateway Middle School Student Store!

Our store offers basic school supplies and snacks throughout the year.

Location: Next to the Commons (Look for signs)

Dates: Fridays during all three lunch periods starting September 20th

Hours: LIF:10am -12:15pm

Early Release: 9:30 am – 11:15 am

Payment: Cash only

Coming Soon!

Volunteer sign-up and list of School Supplies and Snack Items for Sale

[Jovie Santos](#), co- chair.

[Kristi Thomsen](#), co-chair

THANK YOU VOLUNTEERS



Volunteer Opportunities

General Volunteers Needed

There are all kinds of volunteer opportunities at the school throughout the year. Contact Jen Rasmussen to sign-up and when an opportunity arises she'll send out the details of the upcoming events. If you know of something particular you are interested in, let her know. you can reach her at jenlueck18@gmail.com or 206-715-5548. Thank you for being available.

Communications-Website and eBlast Help Needed

We are looking for someone that Laura can train to take over updating the website and writing the eBlast newsletter. Contact Laura at lkpete@mac.com for more information.

GATEWAY MIDDLE SCHOOL NEWS

[GBN](#) (morning announcements)

Click [here](#) for the parent newsletter from the school - *The Gateway Page*

Catch a game! Are you looking for the Gateway Sports Schedules? You can find them all here: [Gateway Sports Schedules](#)

Volunteers Needed for 6th Grade Social

October 17th is the 6th grade only social (school dance). To make these amazing and fun social opportunities for our students happen, we need you! Here is how you can help:

- Sell social tickets at lunch on Tuesday 10/15, Wednesday 10/16 or Thursday 10/17 from 10:35- 11:30.
- Chaperone the social on Thursday 10/17 from 2:30 until 5:15.

Please email mwalsh@everettsd.org to sign up to help for any (or all J) of these times!!

Donations Needed

Gateway has implemented a new procedure for recognizing students who show character and make wise choices. The staff is passing out GUARD tickets to students who go above and beyond in displaying the GUARD qualities of Grit, Universal Respect, Acceptance, Responsibility, and Doing What's Right. Students submit their tickets for drawings; there will be regular lunch time drawings for small prizes and monthly drawings for more substantial prizes. Prizes are needed for the GUARD ticket drawings, and donations of the following items will be much appreciated:

Regular lunchtime drawings (small items)

- fun keychains (for hanging on backpacks)
- sidewalk chalk
- mechanical pencils and/or .7 lead
- Takis or Hot Cheetos
- pens/markers/Flair pens
- Outshine Bars/fruit Otter Pops
- cute sticky note pads

Monthly drawings (large items)

- Funko figures
- \$5 giftcards to local businesses (Starbucks/Taco Bell/Subway etc)
- Gateway swag
- Earbuds
- Pop sockets

There is a collection box at the front office where prizes can be dropped off.
Thank you!

EVERETT PTSA COUNCIL, WSPTA & NATIONAL PTA INFO

WSPTA MEMBER BENEFITS
<https://www.wastatepta.org/get-involved/member-benefits/>

WSPTA Legislative Assembly

At legislative assembly, you will discover the power PTA has to advocate for every child – the whole child – regardless of race, creed, gender, or zip code. In PTA every member has an equal voice, and your input matters a great deal to me, and to the success of our member-driven platform.

If you’ve never attended this event before, you’ll likely find it exciting and energizing! Whether you choose to watch and listen to the debates or stand up and voice your opinion is up to you. Either way, you’ll be part of our grassroots advocacy in action.

The top five reasons to attend legislative assembly:

- Hear from inspiring speakers and learn about the legislative accomplishments WSPTA had last year.
- Add your PTA’s voice to our legislative platform for the coming year.
- Attend education sessions to learn about the proposed issues and resolutions and about advocacy at all levels – state, district, and local.
- Network with other PTA leaders and collaborate towards making a difference in your local area.
- Because it’s FUN

During the WSPTA Legislative Assembly, delegates will have the opportunity to debate, amend, and vote on short-term platform issues, long-term resolutions, and principles that were brought forth by the members through the grassroots submission process late last spring.
The [2019 Voters’ Guide](#) is now available. A [survey](#) to gather input from the members of your local PTA or council is also available as a complement to the guide.

National PTA Podcasts
Middle School: What Every Parent Should Know
How do you allow your middle schooler to grow their sense of independence while still staying involved in their education? Phyllis Fagell joins us on the podcast to share her expert insight and advice. Listen now on your favorite app, subscribe to the podcast and leave a 5-star review! [Get your #BackpackNotes](#)

National PTA’s [Our Children Magazine](#) great info for parents and students.
Great articles on Parenting, Education, Wellness, Family Fun and PTA Community.



EVERETT SCHOOL DISTRICT NEWS

The teen vaping epidemic – what parents need to know

Speaker: Jennifer Reid MPH Snohomish Health District
Youth Tobacco Prevention Program

Parent Education Nights

Thursday, Nov. 7Eisenhower Middle School cafeteria..... 7 p.m.
Monday, Nov. 18Heatherwood Middle School cafeteria..... 7 p.m.
Thursday, Nov. 21Community Resource Center..... 7 p.m.

Get all your questions about vapor devices answered!

- Is this really an epidemic?
- I thought vapes were nicotine free?!
- Isn't vaping safe?
- What is that thing in the picture?

Snohomish Health District

COMMUNITY NEWS

Mill Creek Library

2019-20 PTSA Officers
[Kori Dewing](#), President
[Andrea Rosen](#), VP Fundraising
[Jen Rasmussen](#), VP Volunteers
Cherlie Camero-Gushiken, Secretary
[Hai Evans](#), Treasurer
[Melissa Hinze](#) and Eileen Sugimoto, Membership

Laura Peterson [Gateway PTSA Communications](#)
_
If you no longer wish to receive this eBlast, please use the **UNSUBSCRIBE** option listed at the bottom of this message. Or reply and we will remove you from the list._

Click the link below for our website:

www.gatewaypts.org

Click the link below to follow us on Facebook:



The district shall provide equal educational opportunity and treatment for all students in all aspects of the academic and activities program without regard to race, color, national origin, creed, religion, sex, sexual orientation, gender expression, gender identity, veteran or military status, the presence of any physical, sensory or mental disability or the use of a trained dog guide or service animal by a student with a disability.

Designated to handle inquiries about nondiscrimination policies are:
Affirmative Action Office – Carol Stolz, cstolz@everettsd.org, 425-385-4106 **Title IX Officer** – Randi Seaberg, rseaberg@everettsd.org, 425-385-4104
504 Coordinator – Becky Ballbach, rballbach@everettsd.org, 425-385-4063 **ADA Coordinator** – Becky Clifford, rclifford@everettsd.org, 425-385-5250
Address: 3900 Broadway, Everett, WA 98201

Gateway Middle School PTSA
15404 Silver Firs Dr.
Everett, WA 98208
425-530-8465

Update your [Email Preferences](#) or [Unsubscribe](#)

